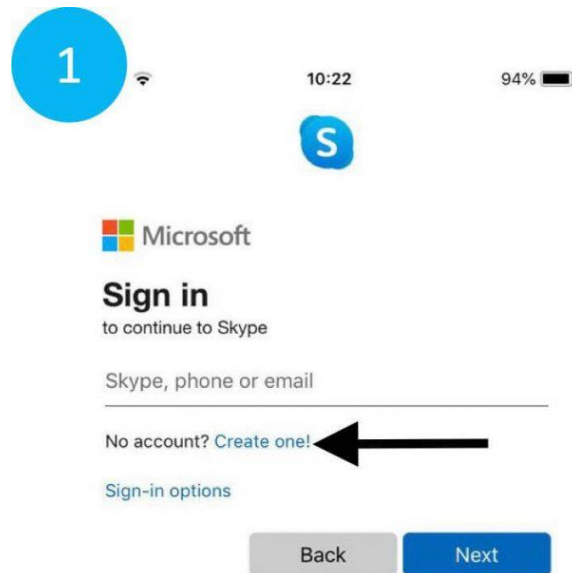
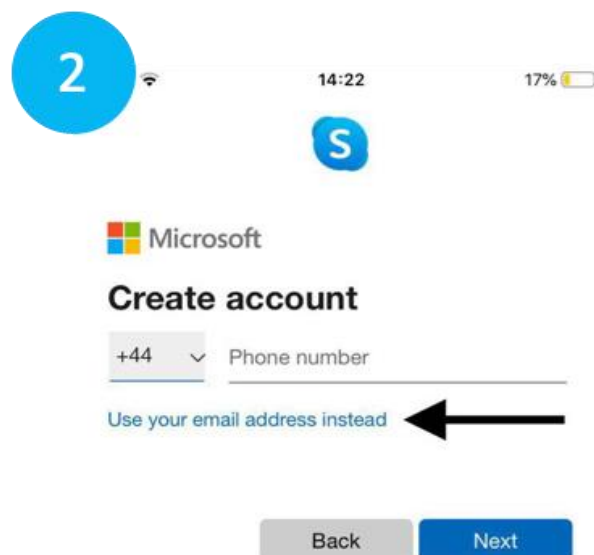


How to Create a Skype Account on your Phone

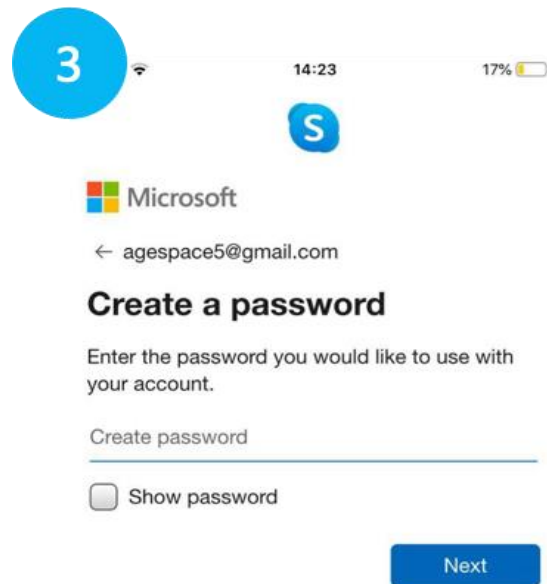
Step 1) You will be asked to sign in. If you do not have a Skype account, click 'Create one!', as the arrow points to in the photo below.



Step 2) You will be asked for a phone number or email address to create your account. We recommend using your email address, as this is the easiest way to verify your account.

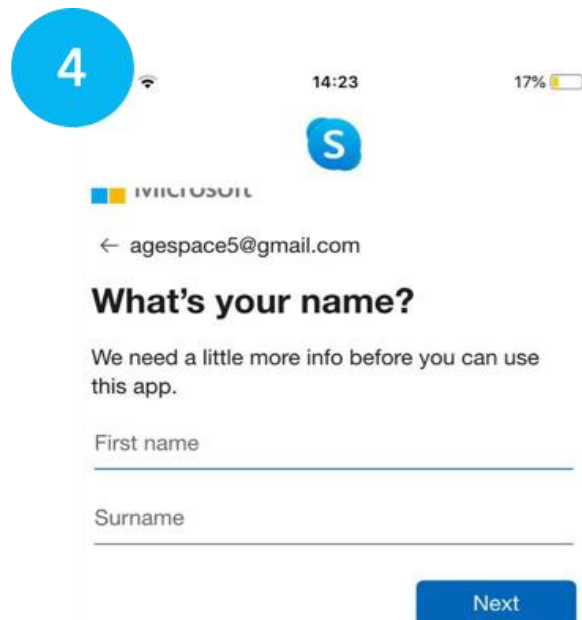


Step 3) You will then choose a password. Remember to write it down somewhere safe!



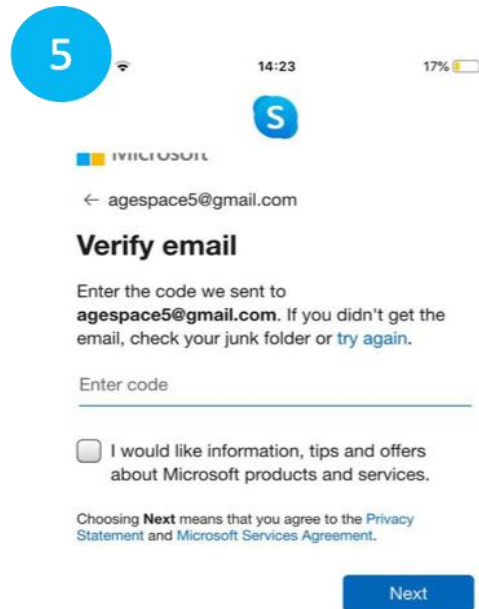
A screenshot of a mobile phone interface showing the Microsoft account creation process. At the top left, a large blue circle contains the number '3'. The status bar at the top shows the time '14:23' and a battery level of '17%'. Below the status bar is a blue circle with a white 'S'. The Microsoft logo is displayed, followed by the email address 'agespace5@gmail.com'. The main heading is 'Create a password'. Below this, it says 'Enter the password you would like to use with your account.' There is a text input field with the placeholder text 'Create password'. Below the input field is a checkbox labeled 'Show password'. At the bottom right, there is a blue button labeled 'Next'.

Step 4) You will be asked to enter your name and some other details. This will help other people to add you as a contact on Skype.



A screenshot of a mobile phone interface showing the Microsoft account creation process. At the top left, a large blue circle contains the number '4'. The status bar at the top shows the time '14:23' and a battery level of '17%'. Below the status bar is a blue circle with a white 'S'. The Microsoft logo is displayed, followed by the email address 'agespace5@gmail.com'. The main heading is 'What's your name?'. Below this, it says 'We need a little more info before you can use this app.' There are two text input fields: 'First name' and 'Surname'. At the bottom right, there is a blue button labeled 'Next'.

Step 5) Next, you will have to validate your Skype account by email. Log in to your email and follow the instructions sent to you by 'Microsoft account team'. They will have sent you an email containing a 4 digit code that you must input on the Skype app.



Step 6) You need to validate your account by entering the 'characters you see', to ensure that you are a real person (robots can't manage this task). Type in the letters and numbers that are in the unusual font on your device.

